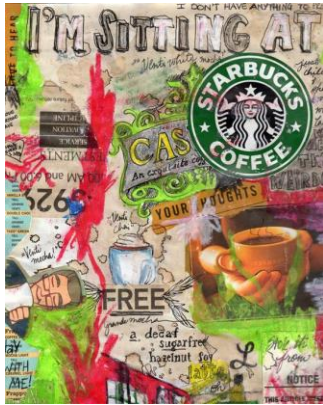


Sketchbook Assignments: Start on SB1 and work in order each week. Each Friday you will have the next sketchbook due. Turn assignments in on Instagram using the hashtag, #sketches4riley. SB1 is due Jan 10. You may turn them in early and/or work ahead. SBs that are over a week late will only be awarded up to 80% credit and you may only turn in late assignments until the grading period ends.

1. **Observational Collage:**
Sit in one spot and record your observations and thoughts both artistically and with words. Use a variety of media.



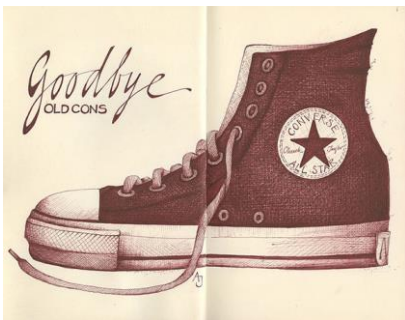
2. **White on Black:**
Using a white colored pencil or gel pen to do a drawing on black paper.



3. **Sunlight observation:**
Choose two different times a day and do a quick color study of a landscape. Record your times on each.



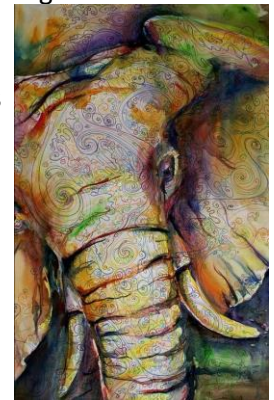
4. **Draw a Shoe:**



5. **Mixed Media Drawing:**
Collage 2 other types of paper onto your SB. Use 3 types of materials to create a layered drawing.



6. **Colored Zentangle:**
Do a zentangle and color the edges where shadows should go.



7. **Positive/Negative:**
Show the negative shape of an object and the positive on the same sheet of paper. Any media.



8. **Pencil Manipulation:**
Draw bent and warped pencils to create an object.




9. **Folds of Fabric:**
Use pastels to draw fabric of your choice.

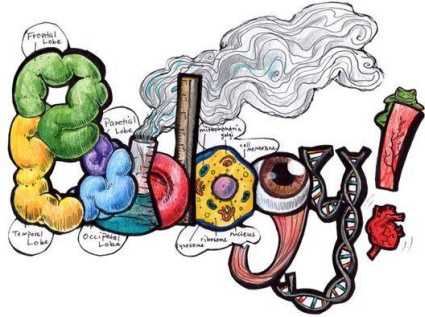


Sketchbook Assignments: Start on SB1 and work in order each week. Each Friday you will have the next sketchbook due. Turn assignments in on Instagram using the hashtag, #sketches4riley. SB1 is due Jan 10. You may turn them in early and/or work ahead. SBs that are over a week late will only be awarded up to 80% credit as you may only turn in late assignments until the grading period ends.


10. **Splash of Color:**
Do a pen and ink drawing over variegated washes (watercolor splashes).




11. **Word Art:**
Artistically draw a word with things that relate to the word.




12. **Drawing within a Still Life:**
Draw an image on a piece of paper with items around it. Items could relate to the drawing or just be things you would have lying around.




13. **Contours & Patterns:**
Draw in contour for your foreground with patterns for your background.



14. **Composition Play:**
Divide page into squares. Choose related items and arrange. Some items will take up multiple squares, others will be cropped.




15. **Letter Landscape:**
Imagine a letter as a mountain, building, etc. and create a blend of text and an outdoor scene.



16. **Pop Art:**
Draw or paint on item in 4 color schemes divided on your page.



17. **Representational, Abstract, Nonobjective:**
Choose one scene and draw it in the three different styles.



18. **4 Step Critique:**
Write a critique about the piece of artwork on the sheet below. You should have a paragraph for each part of the critique. Your sections are:
Describe: What exactly are you seeing?
Analyze: How are they using art elements and principles of design.
Interpret: What do you think the meaning of the artwork is or if the object is unclear, what do you think it is?
Judge: Are they successfully using art elements and principles?

Sketchbook Assignments: Start on SB1 and work in order each week. Each Friday you will have the next sketchbook due. Turn assignments in on Instagram using the hashtag, #sketches4riley. SB1 is due Jan 10. You may turn them in early and/or work ahead. SBs that are over a week late will only be awarded up to 80% credit and you may only turn in late assignments until the grading period ends.

SB 18 Artwork

Peter Stauss- Phänomen

Large Oil on Canvas

